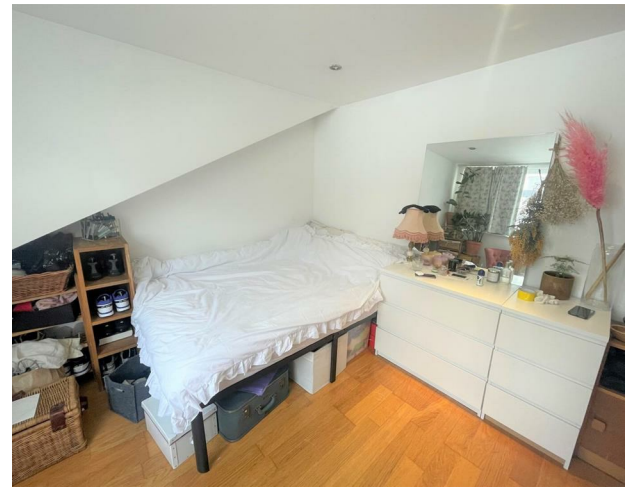


Flat 5, 35, Church Lodge Church Walk, London, N16 8QR  
£1,950 Per month

am  
alexmarks.co.uk



Flat 5, 35, Church Lodge Church Walk, London, N16 8QR

£1,950 Per month

Council Tax Band: B

This is a lovely and well located 1 double bedroom apartment situated within this small but prestigious development of just 6 apartments. Ideally located in Stoke Newington, walking distance to Church Street and Stoke Newington high street, it boasts wooden floors throughout, a spacious open plan fully fitted kitchen and living room, a spacious bedroom, and a modern bathroom suite. It also has many interesting alcoves which are very handy for storage.

Property is available Unfurnished





448 Hornsey Road

London

N19 4EE

02070787950

alex@alexmarks.co.uk

www.alexmarks.co.uk

